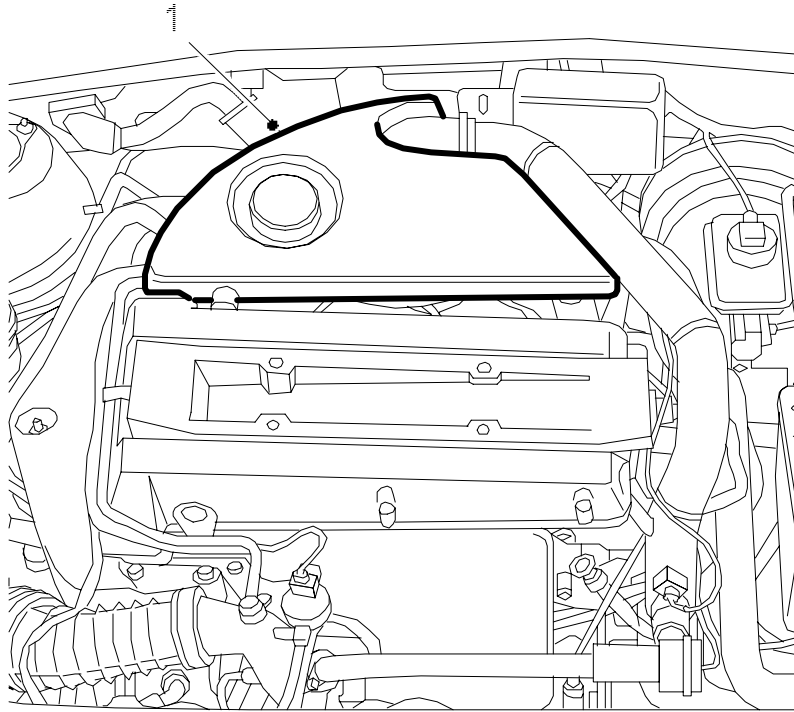
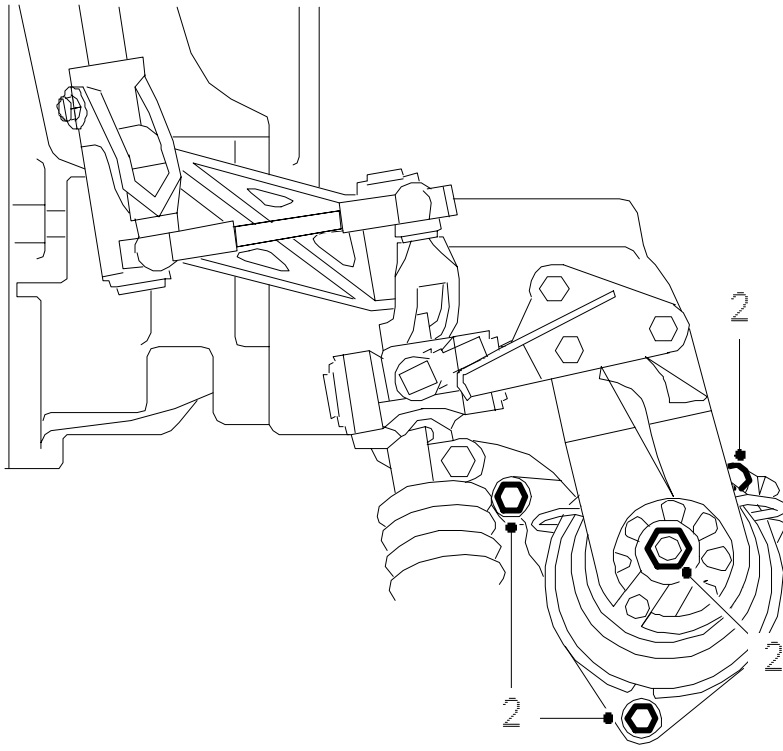


Anti-roll bar**To remove**

E731R031

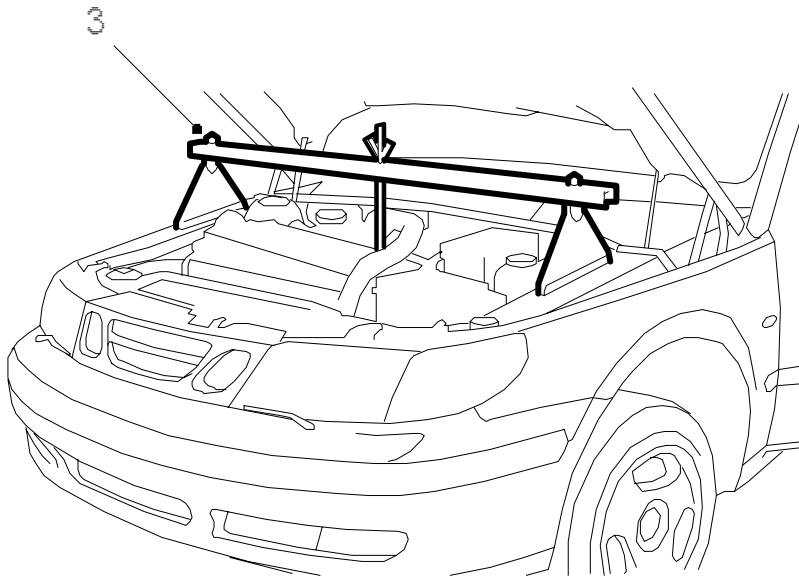
1. Remove the cover over the intake manifold.
- 2.

Remove the engine cushion from the engine mounting and subframe.



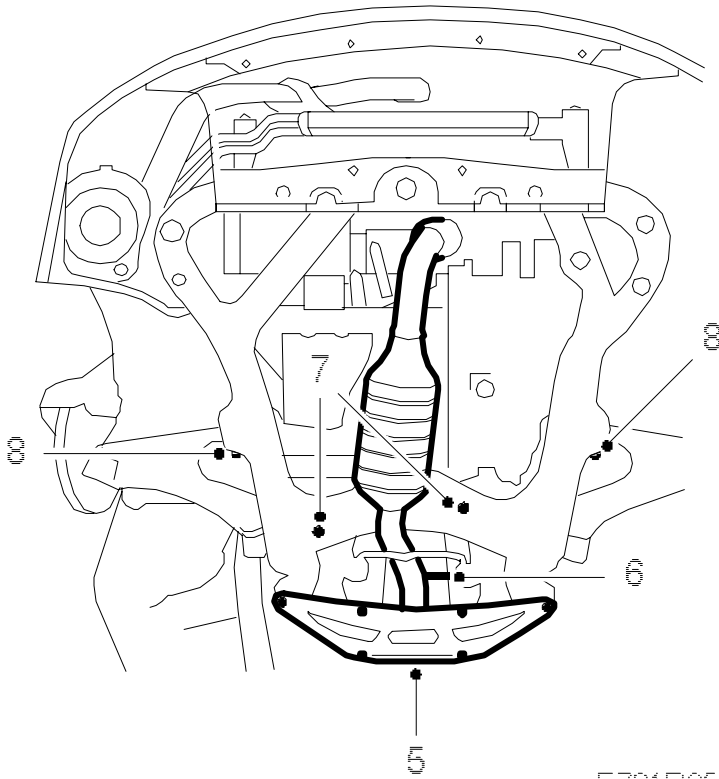
E731R060

3. Position lifting beam 83 94 850 on the wings and fit the hook in the engine's rear lifting eyebolt.



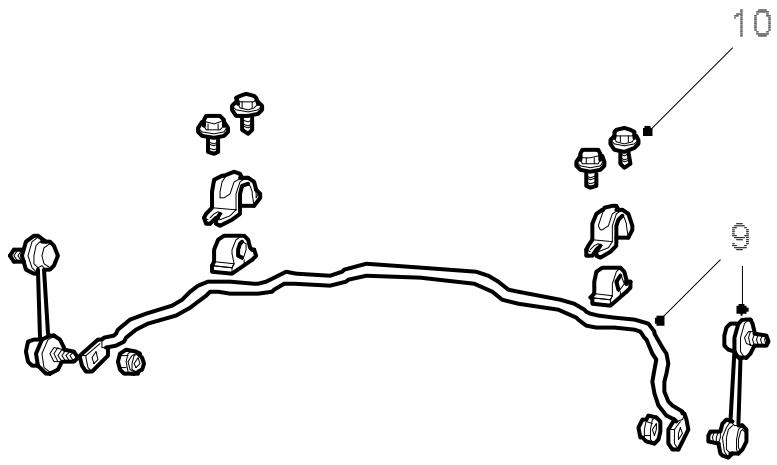
E731R032

4. Raise the car and remove the front wheels.
5. Remove the reinforcement at the subframe's rear mounting point.



6. Pull the joint between the catalytic converter and silencer apart.
7. Remove the two steering gear retaining bolts.
8. Remove the bolts from the subframe's centre attachment point and lower the rear of the subframe.
- 9.

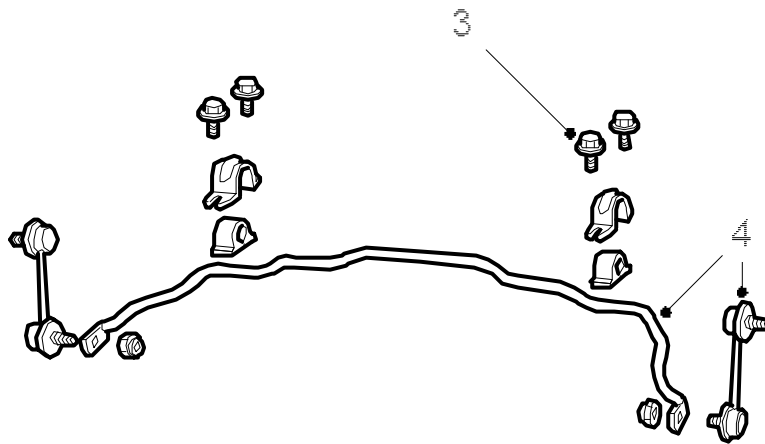
Detach the anti-roll bar from the links.



E 731R035

- 10. Remove the bolts from the clamps securing the anti-roll bar to the subframe.
- 11. Withdraw the anti-roll bar through the wheel housing on the passenger's side.

To fit



E 731R036

1. Lift the anti-roll bar into position through the wheel housing on the passenger's side. Make sure that it does not catch on any hoses or cables in the engine bay.

2. Lubricate the bushes with Molycote 33 and fit them with the opening facing rearwards.

3. Tighten the bolts in the clamps securing the anti-roll bar to the subframe.

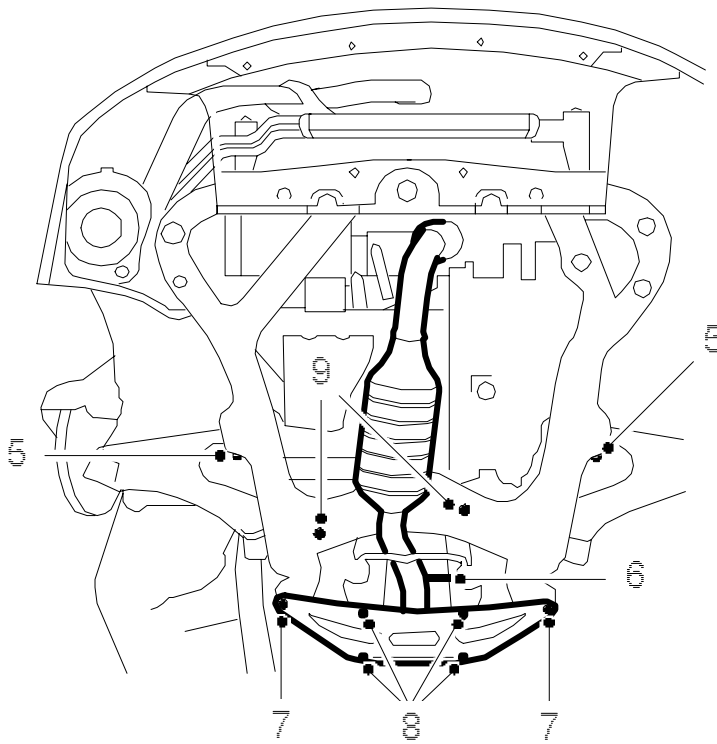
Tightening torque 25 Nm (20 lbf ft)

4. Tighten the nuts securing the anti-roll bar to the links.

Tightening torque 90 Nm (65 lbf ft)

5.

Raise the subframe and tighten the bolts at the centre attachment points.



E731R054

Tightening torque 100 Nm +45° (75 lbf ft +45°) .

6. Close the joint between the catalytic converter and silencer.
7. Fasten the subframe at its rear attachment points together with the reinforcement.

Tightening torque 100 Nm +45° (75 lbf ft +45°) .

8. Tighten the bolts securing the reinforcement to the subframe.

Tightening torque 65 Nm (50 lbf ft)

9. Tighten the steering gear's retaining bolts.

Tightening torque 95 Nm (70 lbf ft)

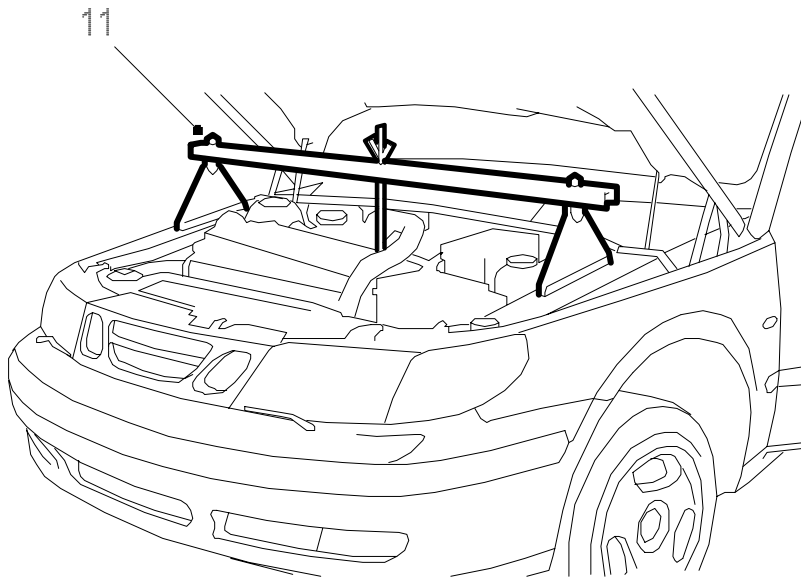
10. Fit the wheels, see [Wheels](#).

Tightening torque 110 Nm (81 lbf ft)

Lower the car to the floor.

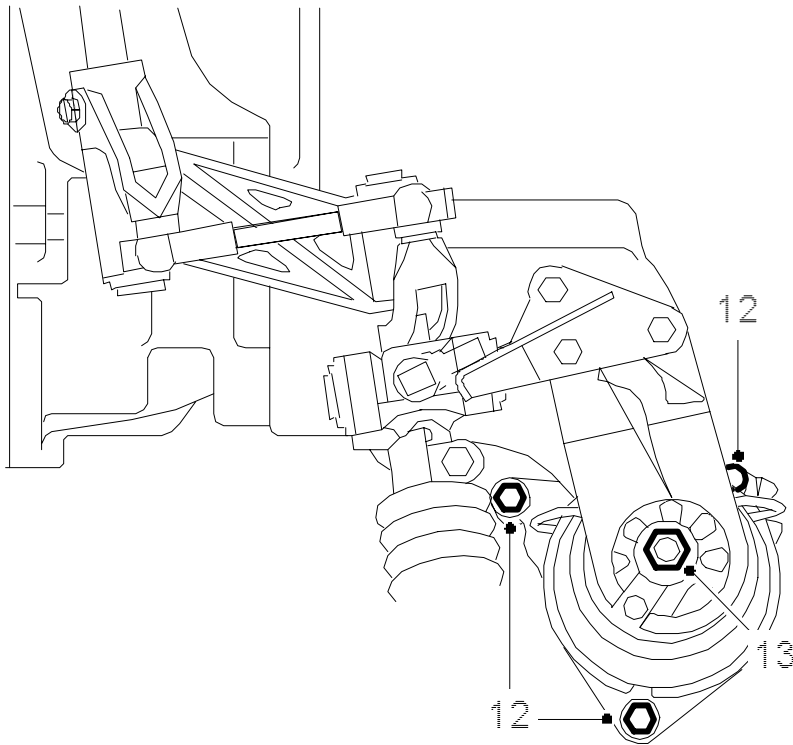
- 11.

Lower the engine onto the rear engine cushion and remove the lifting beam.



E731R039

12. Tighten the bolts securing the engine cushion to the subframe.



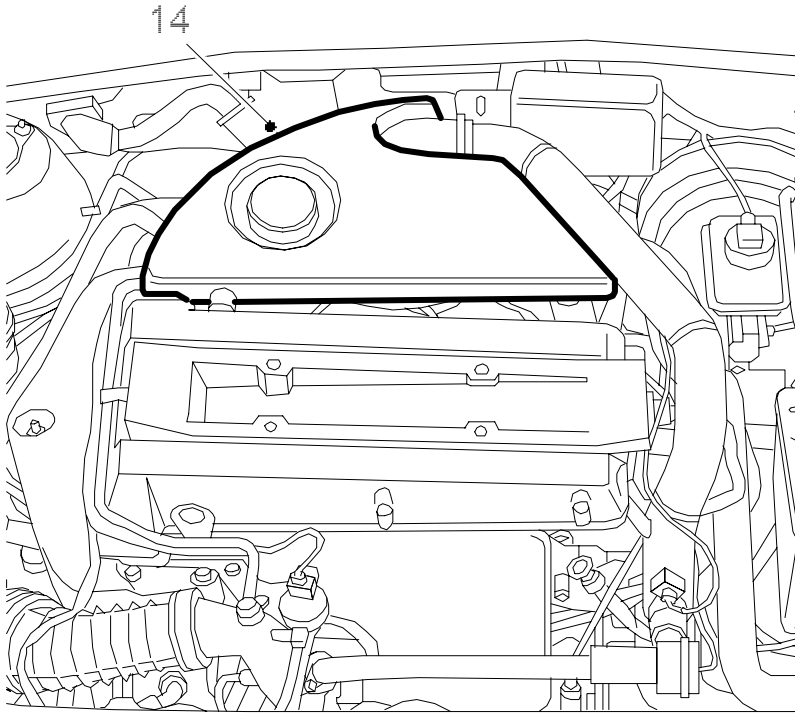
E731R061

Tightening torque 25 Nm (20 lbf ft)

13. Tighten the bolts securing the rear engine cushion to the engine mounting.

Tightening torque 50 Nm (35 lbf ft)

14. Refit the cover over the intake manifold.



E731R040